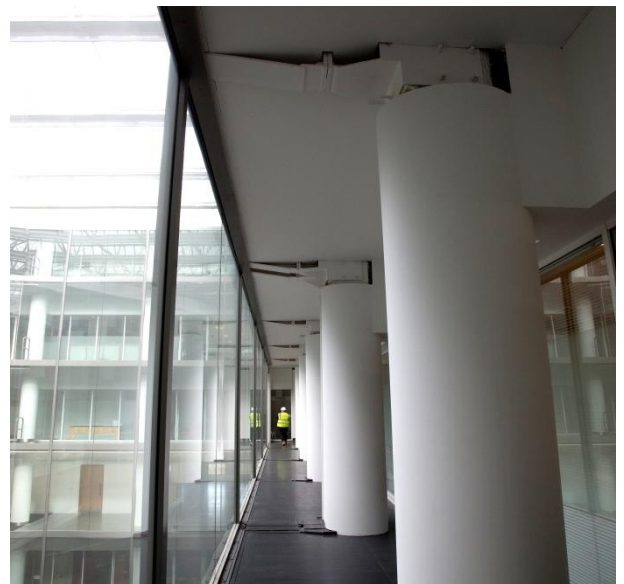
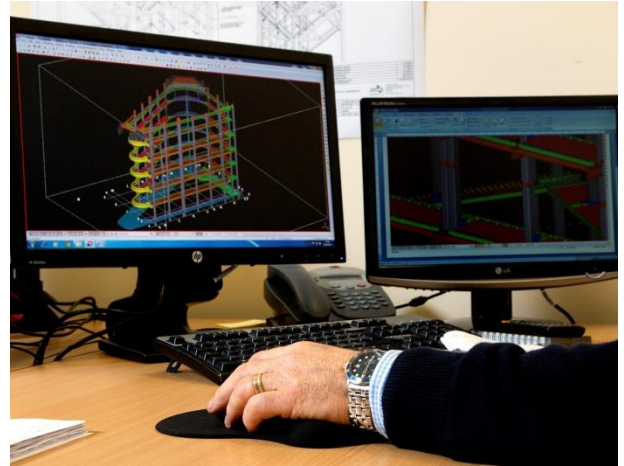


1 TRAFALGAR SQUARE



ASME were contracted to supply and install steelwork around the perimeter of an existing 7 floor atrium of this prestigious building. Steel frames had to connect and cantilever off the existing structure with new floors formed from lightweight purlins and timber. The aim of these works was to increase the lettable floor space and in turn the financial viability of the property. Working within a live building meant these works had to be carried out at night; there were strict limitations to noisy works and safety procedures which had to be adhered to.

Contract value: £510,000

Location: 'Grand Buildings' 1 Trafalgar Square, London

Duration: 8 months